

Abacus®

Leaders in lighting

HORIZONTAL OVERSPILL VERTICAL OVERSPILL

ABACUS REF : FB10/02 ©
FOOTBALL CLASS III
FA MINIMUM STANDARD

FLOODLIGHTING EQUIPMENT
 6x15m MASTS(M1-M6)
 EACH CARRYING THE FOLLOWING FLOODLIGHTS:-
 M1,M3,M4,M6.....1 x AL5760/2KW - NARROW BEAM
1 x AL5760/2KW - MEDIUM BEAM
 M2,M5.....2 x AL5760/2KW - MEDIUM BEAM

LAMPS (CHOICE OF)
 PHILIPS - MHN-LA 2KW 400V/842(220000 INITIAL Lm.).
 OSRAM - HQI-TS2000WDL(225000 INITIAL Lm.).
 VENTURE - MH-TS2000W/L/K12/4K(240000 INITIAL Lm.).

ILLUMINANCE LEVELS
A) INITIAL(100 HRS)
 E.i.ave=226 LUX.

B) MAINTAINED(4000 HRS)
 E.m.ave=180 LUX.

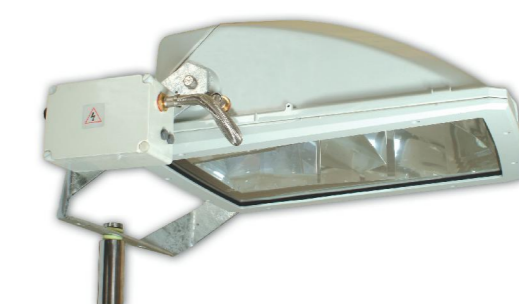
UNIFORMITY
 Emin/Eave=0.69
 Emin/Emax=0.45

MAXIMUM GLARE RATING(GR)=49

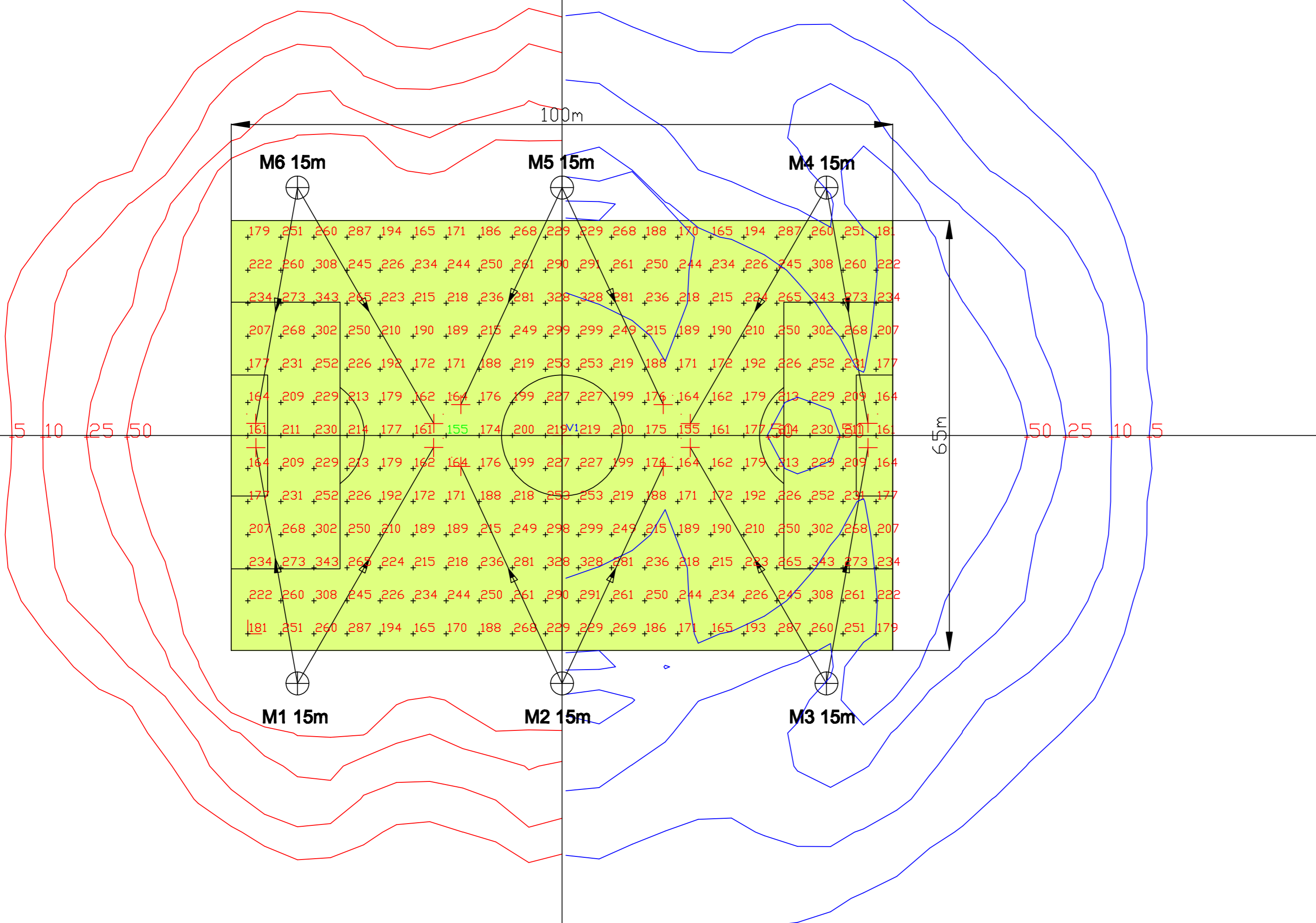
GRID VALUES IN LUX(INITIAL).
 GRID INTERVAL=5m.
CONTOUR VALUES IN LUX(INITIAL).
 CONTOURS:5,10,25,50 LUX.
 VERTICAL ILLUMINANCE CALCULATED AT +3.0m A.G.L.

MAINTENANCE FACTOR=0.80
 BASED UPON:-
 DIRT DEPRECIATION FACTOR=7%
 CLEANING INTERVAL=12 MONTHS.
 LOCATION=MEDIUM POLLUTION.
 LAMP LUMEN DEPRECIATION=14%

NOTE
 THE DESIGN CALCULATIONS ARE BASED UPON PHILIPS LAMPS, THE MAINTAINED ILLUMINANCE LEVEL WILL VARY DEPENDING ON FINAL LAMP CHOICE.



ISO9001 • ISO14001
 OHSAS 18001



Flexible Solutions
 Abacus base hinged masts offer the facility to upgrade this system in the future.

www.abacuslighting.com

All illuminance values are the result of computer calculations, based upon precisely positioned luminaires in a fixed relationship to each other and to the area under examination. In practice the values may vary due to tolerances on luminaires, luminaire positioning, reflection properties and electrical supply.