

Abacus®

Leaders in lighting

ABACUS REF : FB10/09 ©
FOOTBALL CLASS I
COMPETITION STANDARD

FLOODLIGHTING EQUIPMENT
 4x30m MASTS(M1-M4)
 EACH CARRYING THE FOLLOWING FLOODLIGHTS:-
 M1-M4.....10 x AL5900/2000W MHN-SB Pro

LAMPS (CHOICE OF)
 PHILIPS - MHN-SB Pro 2KW (200000 INITIAL Lm.).
 OSRAM - HQI-TS2000WDS(200000 INITIAL Lm.).

ILLUMINANCE LEVELS
A) INITIAL(100 HRS)
 E.i.ave=644 LUX.
B) MAINTAINED(4000 HRS)
 E.m.ave=515 LUX.

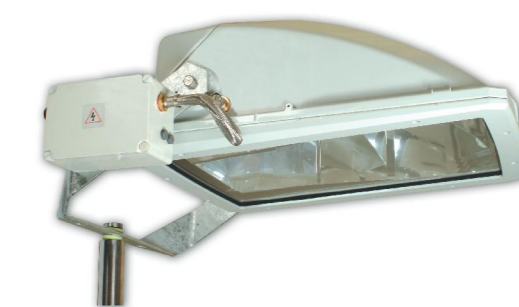
UNIFORMITY
 Emin/Eave=0.71
 Emin/Emax=0.58

MAXIMUM GLARE RATING(GR)=45

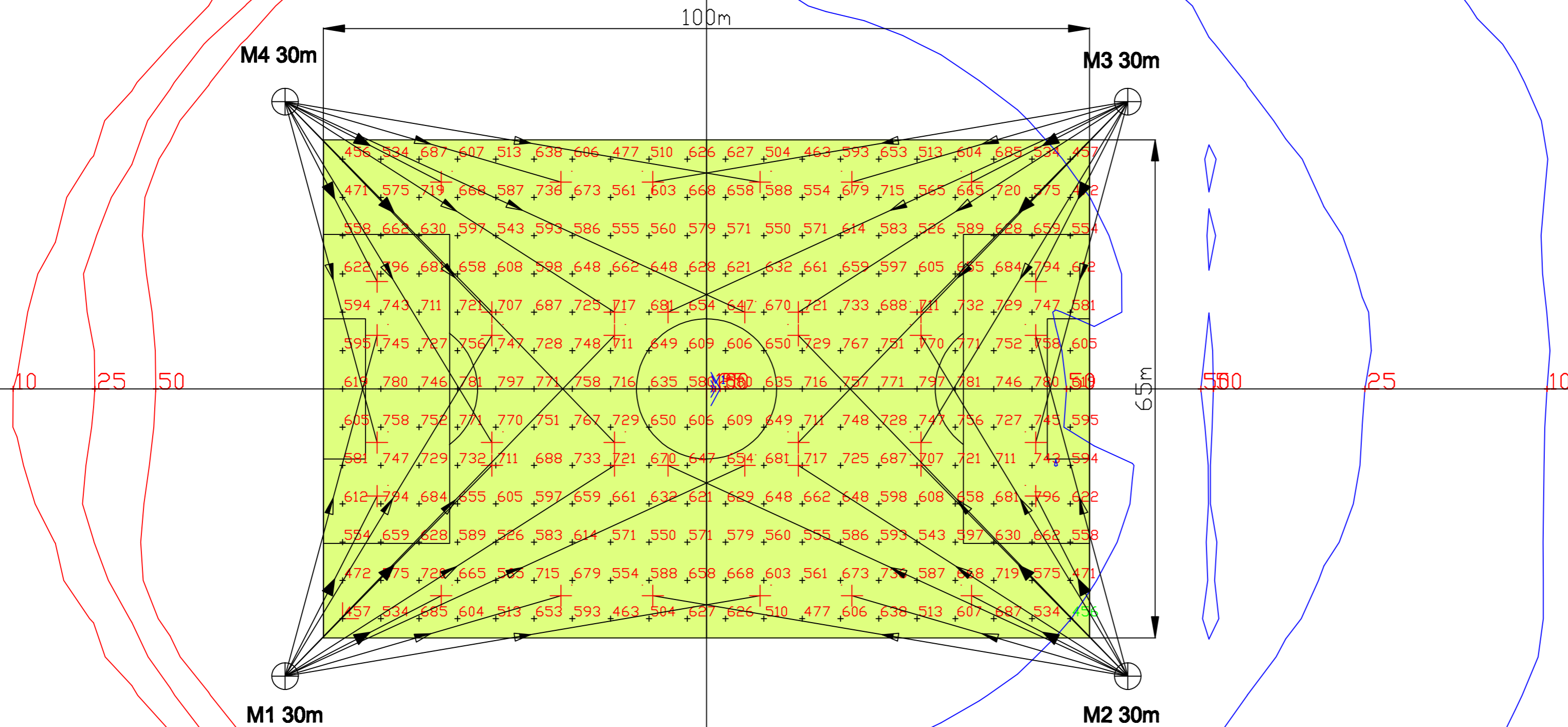
GRID VALUES IN LUX(INITIAL).
 GRID INTERVAL=5m.
CONTOUR VALUES IN LUX(INITIAL).
 CONTOURS:10,25,50 LUX.
 VERTICAL ILLUMINANCE CALCULATED AT +3.0m A.G.L.

MAINTENANCE FACTOR=0.80
BASED UPON:-
 DIRT DEPRECIATION FACTOR=7%
 CLEANING INTERVAL=12 MONTHS.
 LOCATION=MEDIUM POLLUTION.
 LAMP LUMEN DEPRECIATION=14%

NOTE
 THE DESIGN CALCULATIONS ARE BASED UPON PHILIPS LAMPS, THE MAINTAINED ILLUMINANCE LEVEL WILL VARY DEPENDING ON FINAL LAMP CHOICE.



HORIZONTAL OVERSPILL VERTICAL OVERSPILL



Flexible Solutions
 Abacus base hinged masts offer the facility to upgrade this system in the future.

www.abacuslighting.com

All illuminance values are the result of computer calculations, based upon precisely positioned luminaires in a fixed relationship to each other and to the area under examination. In practice the values may vary due to tolerances on luminaires, luminaire positioning, reflection properties and electrical supply.