

HORIZONTAL OVERSPILL

VERTICAL OVERSPILL

# Abacus®

Leaders in lighting

ABACUS REF : GA10/01 ©  
FOOTBALL CLASS III  
COMPETITION STANDARD

**FLOODLIGHTING EQUIPMENT**  
6x18m MASTS(M1-M6)  
EACH CARRYING THE FOLLOWING FLOODLIGHTS:-  
M1,M3,M4,M6.....4 x AL5760/2KW - NARROW BEAM  
.....2 x AL5760/2KW - MEDIUM BEAM  
M2,M5.....1 x AL5760/2KW - NARROW BEAM  
.....4 x AL5760/2KW - MEDIUM BEAM

**LAMPS (CHOICE OF)**  
PHILIPS - MHN-LA 2KW 400V/842(220000 INITIAL Lm.).  
OSRAM - HQI-TS2000WDL(225000 INITIAL Lm.).  
VENTURE - MH-TS2000W/L/K12/4K(240000 INITIAL Lm.).

**ILLUMINANCE LEVELS**  
A) INITIAL(100 HRS)  
E.i.ave=361 LUX.

B) MAINTAINED(4000 HRS)  
E.m.ave=289 LUX.

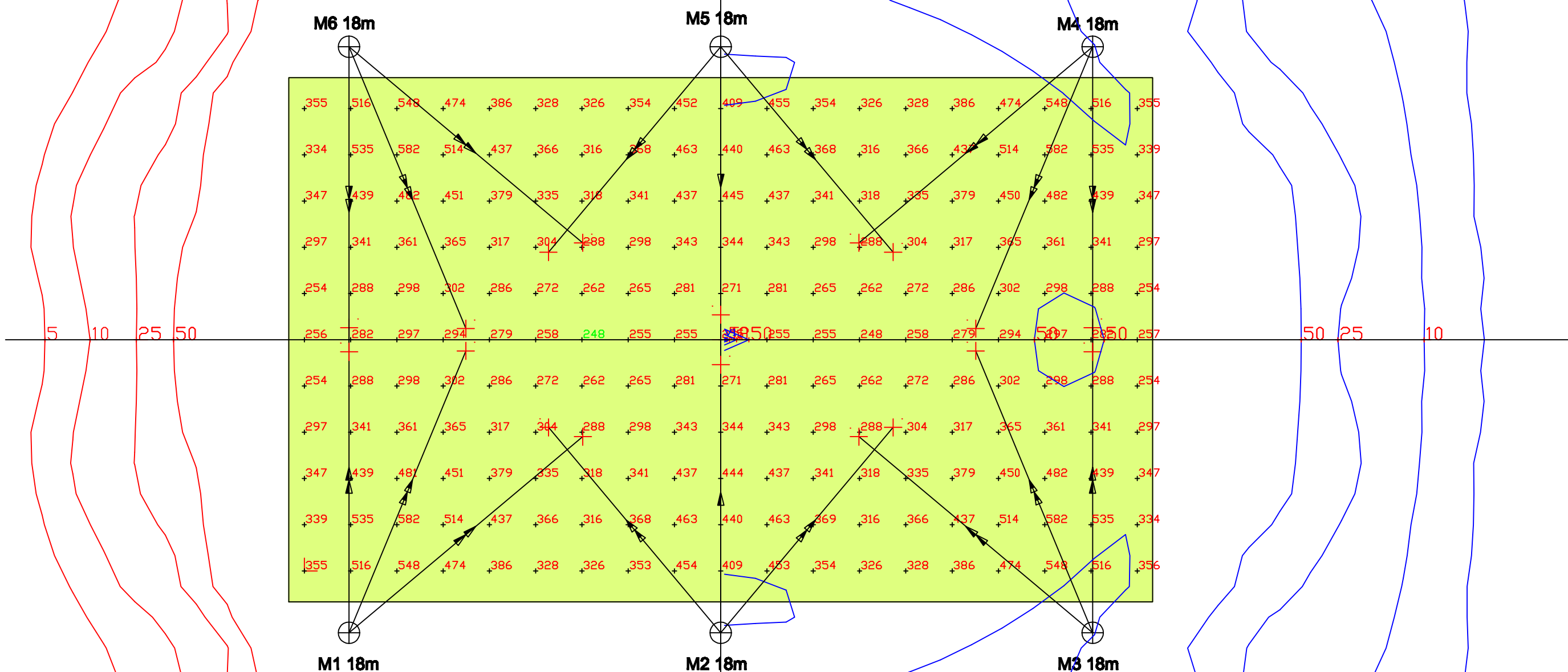
**UNIFORMITY**  
Emin/Eave=0.70  
Emin/Emax=0.36

MAXIMUM GLARE RATING(GR)=49

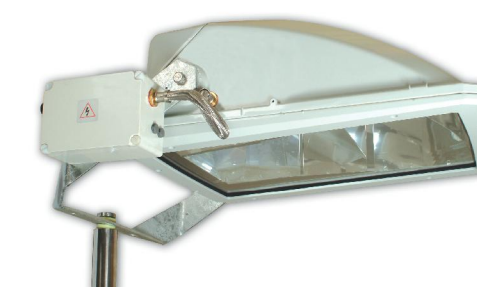
GRID VALUES IN LUX(INITIAL).  
GRID INTERVAL=7.5m.  
CONTOUR VALUES IN LUX(INITIAL).  
CONTOURS:5,10,25,50 LUX.  
VERTICAL ILLUMINANCE CALCULATED AT +3.0m A.G.L.

MAINTENANCE FACTOR=0.80  
BASED UPON:-  
DIRT DEPRECIATION FACTOR=7%  
CLEANING INTERVAL=12 MONTHS.  
LOCATION=MEDIUM POLLUTION.  
LAMP LUMEN DEPRECIATION=14%

**NOTE**  
THE DESIGN CALCULATIONS ARE BASED UPON PHILIPS  
LAMPS, THE MAINTAINED ILLUMINANCE LEVEL WILL  
VARY DEPENDING ON FINAL LAMP CHOICE.



**Flexible Solutions**  
Abacus base hinged masts offer the facility  
to upgrade this system in the future.



[www.abacuslighting.com](http://www.abacuslighting.com)



All illuminance values are the result of computer calculations, based upon precisely positioned luminaires in a fixed relationship to each other and to the area under examination. In practice the values may vary due to tolerances on luminaires, luminaire positioning, reflection properties and electrical supply.