

HORIZONTAL OVERSPILL

VERTICAL OVERSPILL

Abacus[®]
Leaders in lighting

ABACUS REF : RU10_06 ©
RUGBY CLASS I
MATCH STANDARD

FLOODLIGHTING EQUIPMENT
4x30m MASTS(M1-M4)
EACH CARRYING THE FOLLOWING FLOODLIGHTS:-
M1-M4.....10 x AL5900/2KW - NARROW BEAM
.....13 x AL5900/2KW - MEDIUM BEAM
.....3 x AL5900/2KW - WIDE BEAM

LAMPS:
PHILIPS - MHN-SB 2KW 400V/956 (200000 INITIAL Lm.).

ILLUMINANCE LEVELS
A) INITIAL(100 HRS)
E.i.ave=1352 LUX.

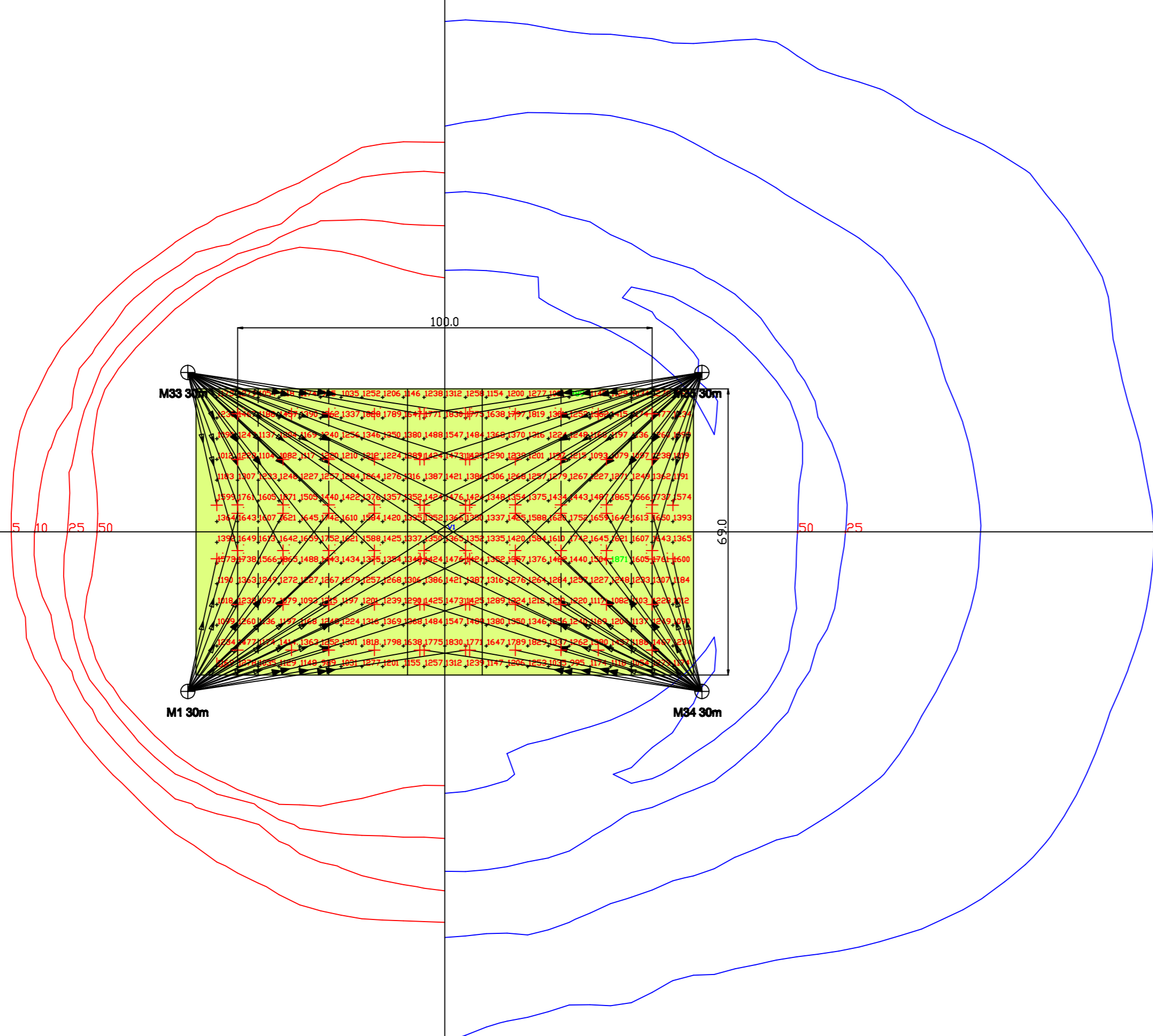
B) MAINTAINED(4000 HRS)
E.m.ave=1041 LUX.

UNIFORMITY
Emin/Eave=0.73
Emin/Emax=0.53

MAXIMUM GLARE RATING(GR)=47

GRID VALUES IN LUX(INITIAL).
GRID INTERVAL=5m.
CONTOUR VALUES IN LUX(INITIAL).
CONTOURS:5,10,25,50 LUX.
VERTICAL ILLUMINANCE CALCULATED AT +3.0m A.G.L.

MAINTENANCE FACTOR=0.80
BASED UPON:-
DIRT DEPRECIATION FACTOR=7%
CLEANING INTERVAL=12 MONTHS.
LOCATION=MEDIUM POLLUTION.
LAMP LUMEN DEPRECIATION=14%



Flexible Solutions
Abacus base hinged masts offer the facility to upgrade this system in the future.



www.abacuslighting.com



All illuminance values are the result of computer calculations, based upon precisely positioned luminaires in a fixed relationship to each other and to the area under examination. In practice the values may vary due to tolerances on luminaires, luminaire positioning, reflection properties and electrical supply.