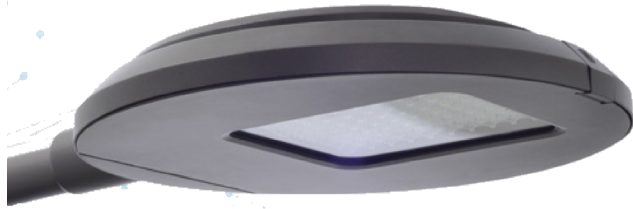


ORIS LED
AL3710 Series
IP66
IK08



Benefits

- High performance amenity and road lighting with performance LED modules
- Short install and maintenance time via tool-free opening hook
- Maintenance safety risks are reduced as power can be automatically switched off when the fitting is opened (available upon request)

Technical features

- Weight: 13 - 14kg
- Windage: 0.06m²
- CRI: 80
- Colour temperature: Available in 3000K or 4000K upon request
- Controls: Presence detector or Dali
- Rated life: 50,000 hours at 700mA
- Classes I and II available
- Mounting;
 - Spigot side entry ø60mm
 - Spigot post top ø60mm or ø76mm
- Five light distribution options available
- IP66 rated with IP68 vent
- IK08 as standard, option for IK10 available
- Incorporated driver
- Thermal regulation by an integrated heatsink
- Surge protector or over/under voltage protection (optional)
- Luminaire made of injected cast aluminium
- Tempered glass
- ULOR 0% (ULOR: Upward Light Output Ratio)
- Extra slim profile fitting with curved design

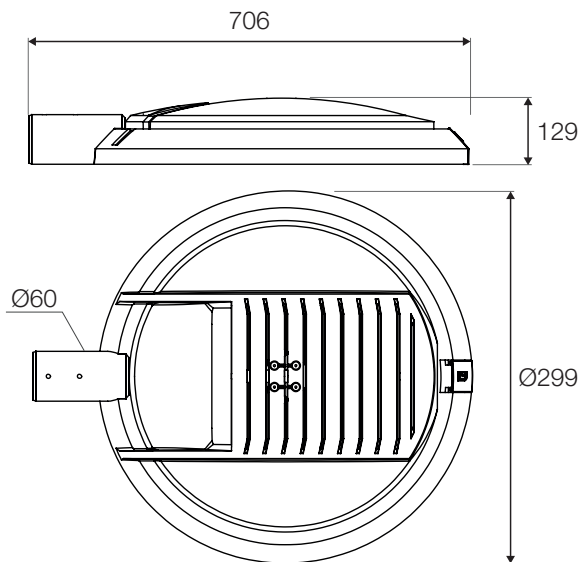
Applications

- Amenity

Colour

- Grey

Dimensions (mm)



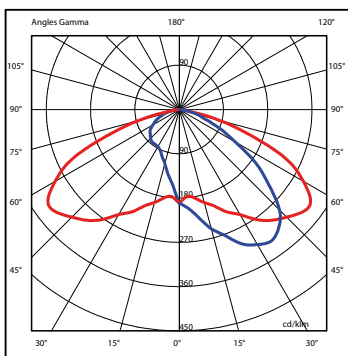
Code	Wattage (W)	Number of LEDs	Lumen Output (lm)	Running Current (mA)	Luminous Efficacy	Windage (m ²)	Weight (kg)
AL3712	50	45	5750	350	115	0.06	13
	70	45	7050	500	101	0.06	13
	100	45	8900	700	89	0.06	13
	89	45	10900	1050	73	0.06	13
AL3713	67.3	60	7667	350	114	0.06	13
	94.3	60	9400	500	99.7	0.06	13
	132.7	60	11867	700	89.4	0.06	13
	203	60	14533	1050	71.6	0.06	14
AL3714	98	90	11486	350	117.2	0.06	13
	140.6	90	14100	500	100.3	0.06	13
	196.6	90	17829	700	90.6	0.06	14

Distribution options

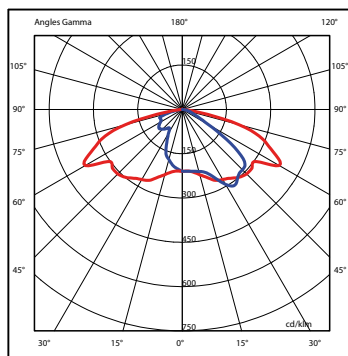
The Oris LED is available in five light distribution options as seen in the following table.
 Please enquire when quoting / ordering.

Light Distribution	Option	Description	Code
Asymmetrical	ASY01	Main & secondary roads, high visual comfort & almost zero glare (very low TI)	A
	ASY02	Normal to wide roads with adjacent channels (paths), wide spacing between light points	B
	ASY03	Narrow lanes, area to be lit targeted	C
Circular	CIR01	Atmospheric lighting of squares, car parks, town centres, pedestrian areas, parks & gardens	D
Symmetrical	SYM01	Atmospheric lighting of squares, car parks, town centres, pedestrian areas, etc. Axial installations (on median strips, on catenary systems, between pavement and bicycle path)	E
PC01	PC01	Completes lighting on protected crossings	F

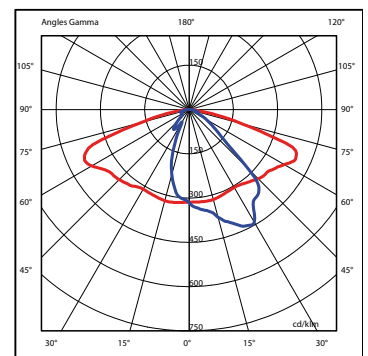
Polar Diagrams



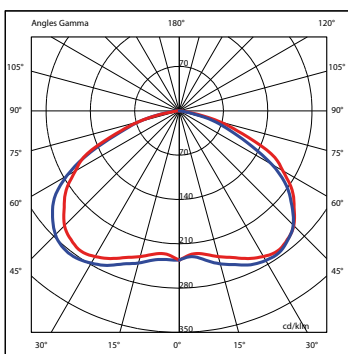
ASY01
 (ASYMMETRICAL)



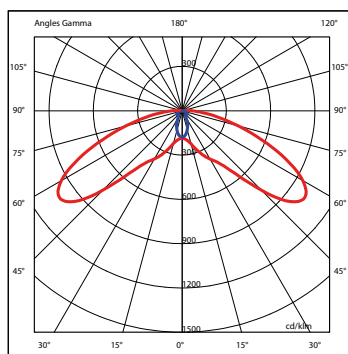
ASY02
 (ASYMMETRICAL)



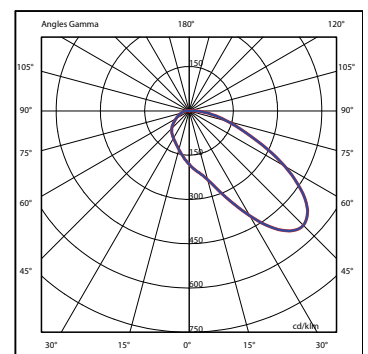
ASY03
 (ASYMMETRICAL)



CIR01
 (CIRCULAR)



SYM01
 (SYMMETRICAL)



PC01
 (PEDESTRIAN)