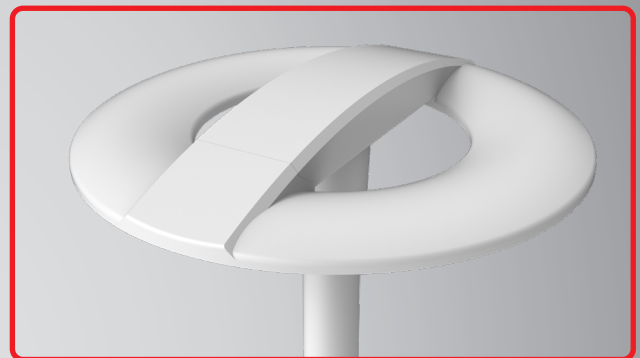


# Orion Pro LED - AL4700 Series

**Abacus**<sup>®</sup>  
Leaders in Lighting

## Orion Pro LED - Key Features

- Direct retrofit to Orion 1 twin lamp 400W
- Available in 180° asymmetrical and 360° symmetrical beam distributions
- 250W symmetrical as standard (Internal drivers)
- 125W asymmetrical as standard (Internal drivers)
- 500W symmetrical option available (Internal drivers)
- Standard working ambient temp. upto 40°C
- 50°C high working ambient temp. option available on request (External drivers)
- Colour temperature 4000K as standard (3000K option available on request)
- Less than 1% upward light
- IP66 and IK10 rated
- 2 Zhaga interfaces for flexibility
- DALI 2 and D4i as standard
- Integrated spigot - 76mm or 89mm shaft compatible
- White polyester powder coated canopy & spigot
- Programmable lumen output to suit designs
- Supplied in recyclable cardboard packaging



## Product Applications

- **Amenity Lighting**
- **Car Parks**
- **Airport Parking**
- **Retail Parks**
- **Railway Stations**
- **Open Area Parks**

## Orion Pro LED Retail & Amenities Light

The Abacus Orion Pro LED floodlight stands out as a pioneering lighting solution, delivering efficient and high-quality illumination for a wide range of outdoor spaces. It excels in achieving British standard BS5489 and European standard BS EN12464-1, making it ideal for urban centres & public amenity areas. Thanks to its advanced LED technology, the Orion floodlight not only provides superior brightness but also achieves significant energy savings, contributing to a reduced environmental footprint.

With its high-output 360-degree light distribution and precise optics, the Orion Pro ensures excellent beam control, offering pinpoint lighting precision while minimising light pollution. Overall, the Abacus Orion Pro represents a sustainable and dependable lighting solution that seamlessly integrates performance, durability, and energy efficiency.



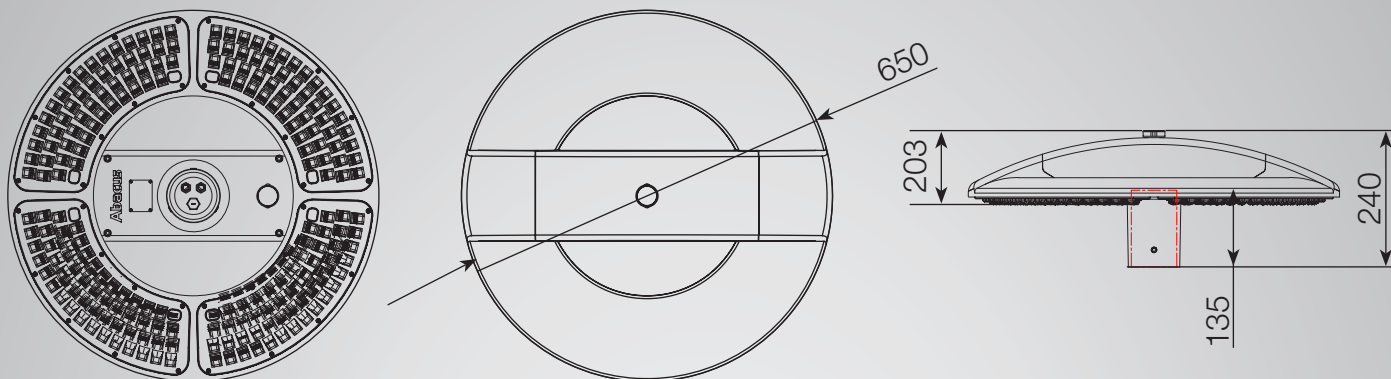
**SAPCA**  
MEMBER



APPROVED  
CONTRACTOR



### Orion Pro LED Dimensions



### Technical Specification

Technical Specification	125W	250W	500W
<b>Luminous Flux:</b>	20,000 lm	40,000 lm	72,000 lm
<b>Colour Temperature:</b>	4000K (Other options available on request)		
<b>Colour Rendering Index (CRI):</b>	Ra70 (Ra80 optional)		
<b>Body Colour:</b>	White: RAL9003 as standard (Other options available on request)		
<b>Lifetime:</b>	L90B10 > 80,000hrs at 25°C Ambient temperature		
<b>Dimensions:</b>	650mm x 203mm		
<b>Weight:</b>	14.1kg ± 10%		
<b>Working Temperature:</b>	-30°C ~ 40°C (50°C optional)		
<b>IP Rating:</b>	IP66		
<b>IK Rating:</b>	IK10		
<b>Max Spigot Length</b>	135mm		
<b>Spigot Diameter</b>	76mm/89mm		
<b>Wind Area</b>	0.0735m <sup>2</sup>		

### Spacings & Sample Levels

Height	Spacing (m)	250W 40,000lm		
		Average	Minimum	Uniformity
6m	40	22	7	0.32
	55	11	1	0.09
8m	40	21	11	0.52
	55	11	3	0.27

Height	Spacing (M)	500W 72,000lm		
		Average	Minimum	Uniformity
10m	55	20	9	0.45
	70	13	4	0.31
12m	55	20	11	0.55
	70	13	5	0.38



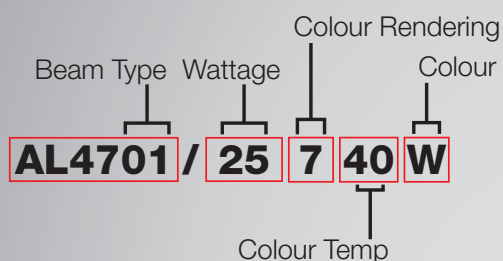
# Orion Pro LED - AL4700 Series

**Abacus**<sup>®</sup>  
Leaders in Lighting

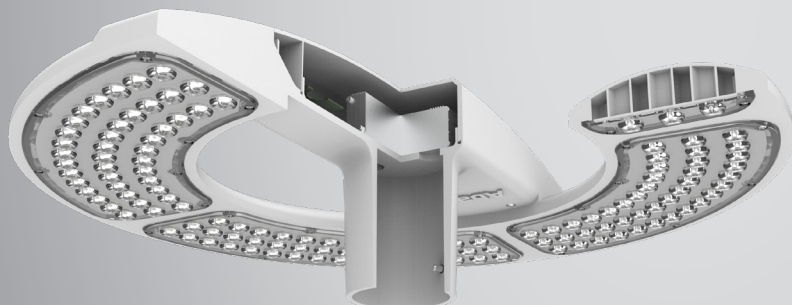
## Product Code Selection

Beam Type & Power	Wattage	Colour Rendering	Colour Temperature	Body Colour
Symmetric = <b>AL4701</b>	125W = <b>12</b> (Asymmetric Only)	Ra70 Standard = <b>7</b>	3000K = <b>30</b>	RAL9003 (White) = <b>W</b>
Asymmetric = <b>AL4702</b>	250W = <b>25</b> (Symmetric Only)	*Ra80 = <b>8</b>	4000K = <b>40</b>	
	500W = <b>50</b> (Symmetric Only)			

### Example Product Selection:

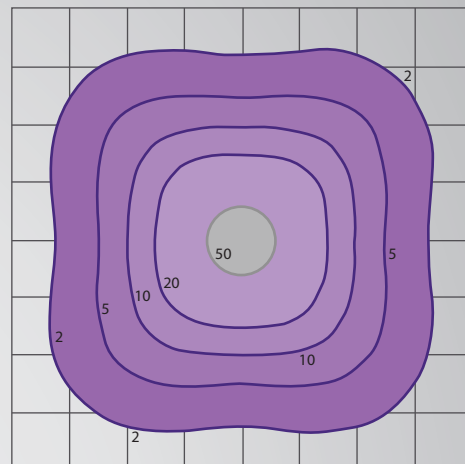


*\*Please contact Abacus for further details on non-standard options, MOQs may apply.*

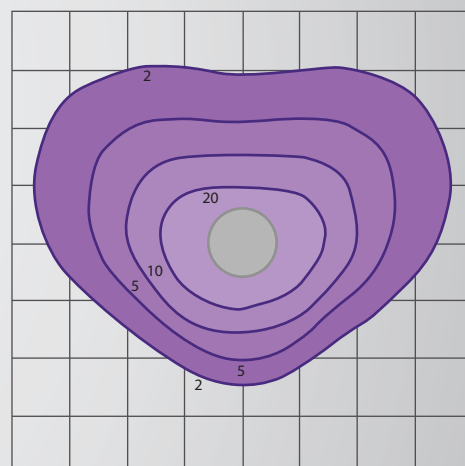


## Light Distribution Photometry

### Symmetrical Distribution AL4701



### Asymmetrical Distribution AL4702



## Orion Pro LED - Typical Column Suitability

- 1.) Static Column \*3 - 12m in height
- 2.) Base Hinge Column \*3 - 12m in height
- 3.) York Hinge Column \*3 - 6m in height

CLICK or SCAN



For More Information

\*The Abacus Lighting columns mentioned above serve as examples for typical installations, but we are not restricted to these options. Abacus Lighting provides a comprehensive range of columns and masts that can accommodate virtually any new or retrofit lighting project.



**SAPCA**  
MEMBER

