

HORIZONTAL OVERSPILL

VERTICAL OVERSPILL

Abacus®

Leaders in lighting

ABACUS REF : TF10_03 ©
ATHLETICS CLASS II
COMPETITION STANDARD

FLOODLIGHTING EQUIPMENT
4x25m MASTS(M1-M4)
EACH CARRYING THE FOLLOWING FLOODLIGHTS:-
M1-M4.....6 x AL5760/2KW - NARROW BEAM
.....3 x AL5760/2KW - MEDIUM BEAM

LAMPS (CHOICE OF)
PHILIPS - MHN-LA 2KW 400V/842(220000 INITIAL Lm.).
OSRAM - HQI-TS2000WDL(225000 INITIAL Lm.).
VENTURE - MH-TS2000W/L/K12/4K(240000 INITIAL Lm.).

ILLUMINANCE LEVELS
A) INITIAL(100 HRS)
E.i.ave=300 LUX.

B) MAINTAINED(4000 HRS)
E.m.ave=240 LUX.

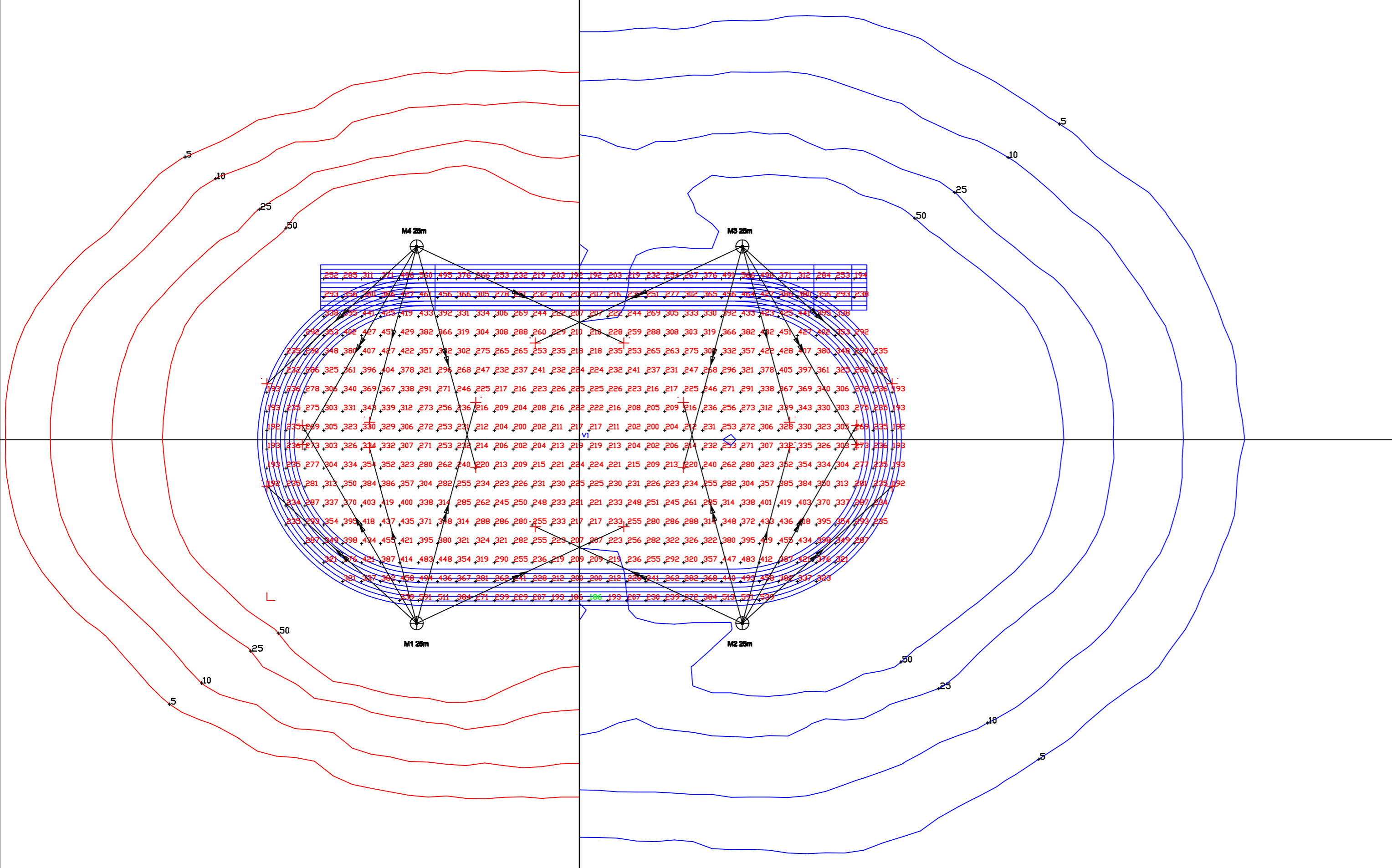
UNIFORMITY
E_{min}/E_{ave}=0.62
E_{min}/E_{max}=0.31

MAXIMUM GLARE RATING(GR)=46

GRID VALUES IN LUX(INITIAL).
GRID INTERVAL=5m.
CONTOUR VALUES IN LUX(INITIAL).
CONTOURS:5,10,25,50 LUX.
VERTICAL ILLUMINANCE CALCULATED AT +3.0m A.G.L.

MAINTENANCE FACTOR=0.80
BASED UPON:-
DIRT DEPRECIATION FACTOR=7%
CLEANING INTERVAL=12 MONTHS.
LOCATION=MEDIUM POLLUTION.
LAMP LUMEN DEPRECIATION=14%

NOTE
THE DESIGN CALCULATIONS ARE BASED UPON PHILIPS LAMPS, THE MAINTAINED ILLUMINANCE LEVEL WILL VARY DEPENDING ON FINAL LAMP CHOICE.



Flexible Solutions
Abacus base hinged masts offer the facility to upgrade this system in the future.



www.abacuslighting.com

All illuminance values are the result of computer calculations, based upon precisely positioned luminaires in a fixed relationship to each other and to the area under examination. In practice the values may vary due to tolerances on luminaires, luminaire positioning, reflection properties and electrical supply.